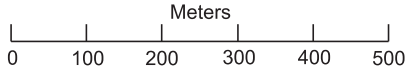


Laurel Highlands Historical Village

Hinckston Run Reservoir Orienteering Map



Scale: 1 : 10 000
Contour Interval: 5 meters



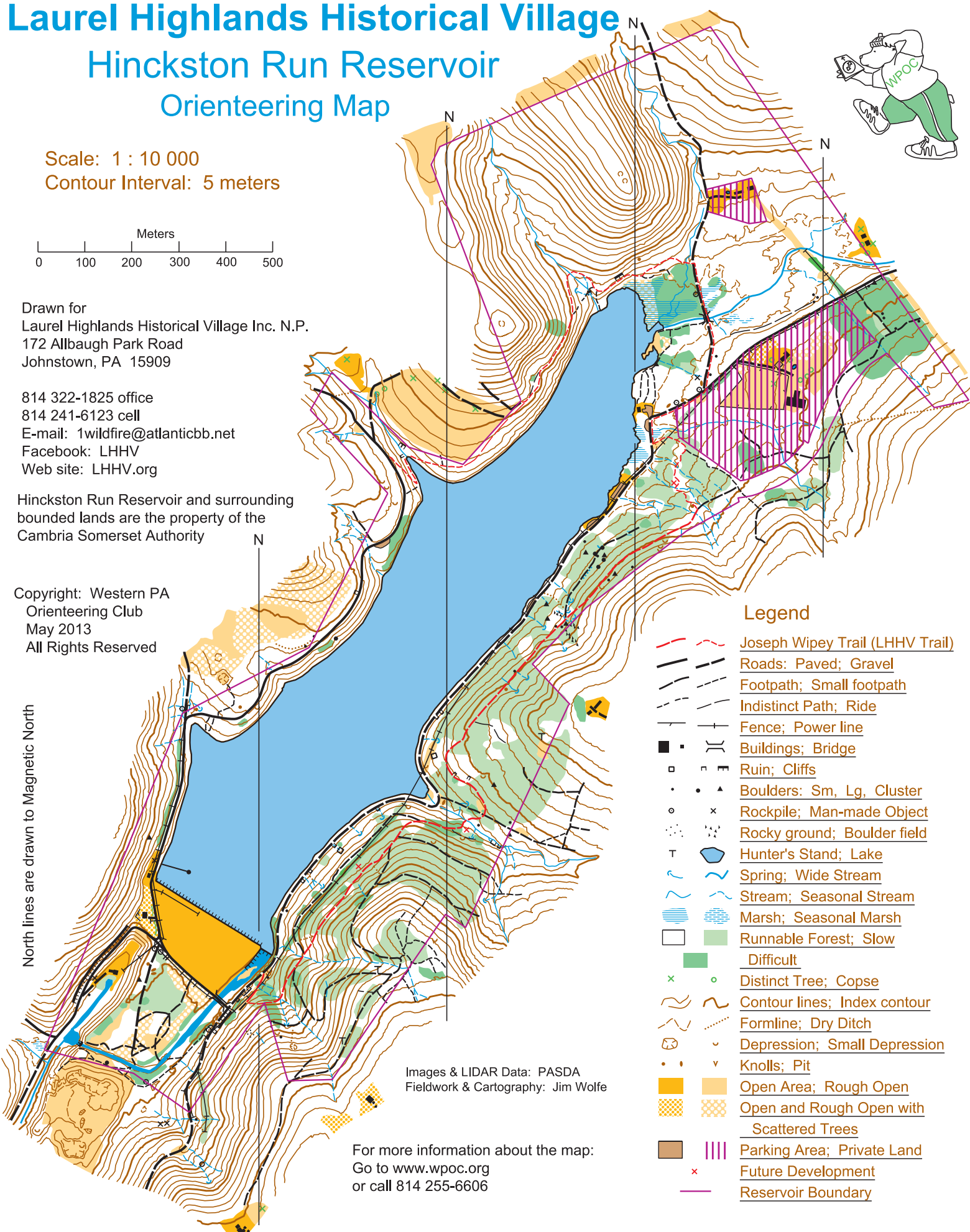
Drawn for
Laurel Highlands Historical Village Inc. N.P.
172 Allbaugh Park Road
Johnstown, PA 15909

814 322-1825 office
814 241-6123 cell
E-mail: 1wildfire@atlanticbb.net
Facebook: LHHV
Web site: LHHV.org

Hinckston Run Reservoir and surrounding
bounded lands are the property of the
Cambria Somerset Authority

Copyright: Western PA
Orienteering Club
May 2013
All Rights Reserved

North lines are drawn to Magnetic North



Legend

- Joseph Wipey Trail (LHHV Trail)
- Roads: Paved; Gravel
- Footpath; Small footpath
- Indistinct Path; Ride
- Fence; Power line
- Buildings; Bridge
- Ruin; Cliffs
- Boulders: Sm, Lg, Cluster
- Rockpile; Man-made Object
- Rocky ground; Boulder field
- Hunter's Stand; Lake
- Spring; Wide Stream
- Stream; Seasonal Stream
- Marsh; Seasonal Marsh
- Runnable Forest; Slow
- Difficult
- Distinct Tree; Copse
- Contour lines; Index contour
- Formline; Dry Ditch
- Depression; Small Depression
- Knolls; Pit
- Open Area; Rough Open
- Open and Rough Open with Scattered Trees
- Parking Area; Private Land
- Future Development
- Reservoir Boundary

Images & LIDAR Data: PASDA
Fieldwork & Cartography: Jim Wolfe

For more information about the map:
Go to www.wpoc.org
or call 814 255-6606