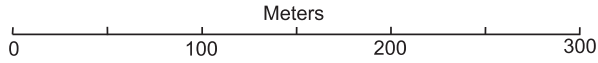


# Beaver County Conservation District

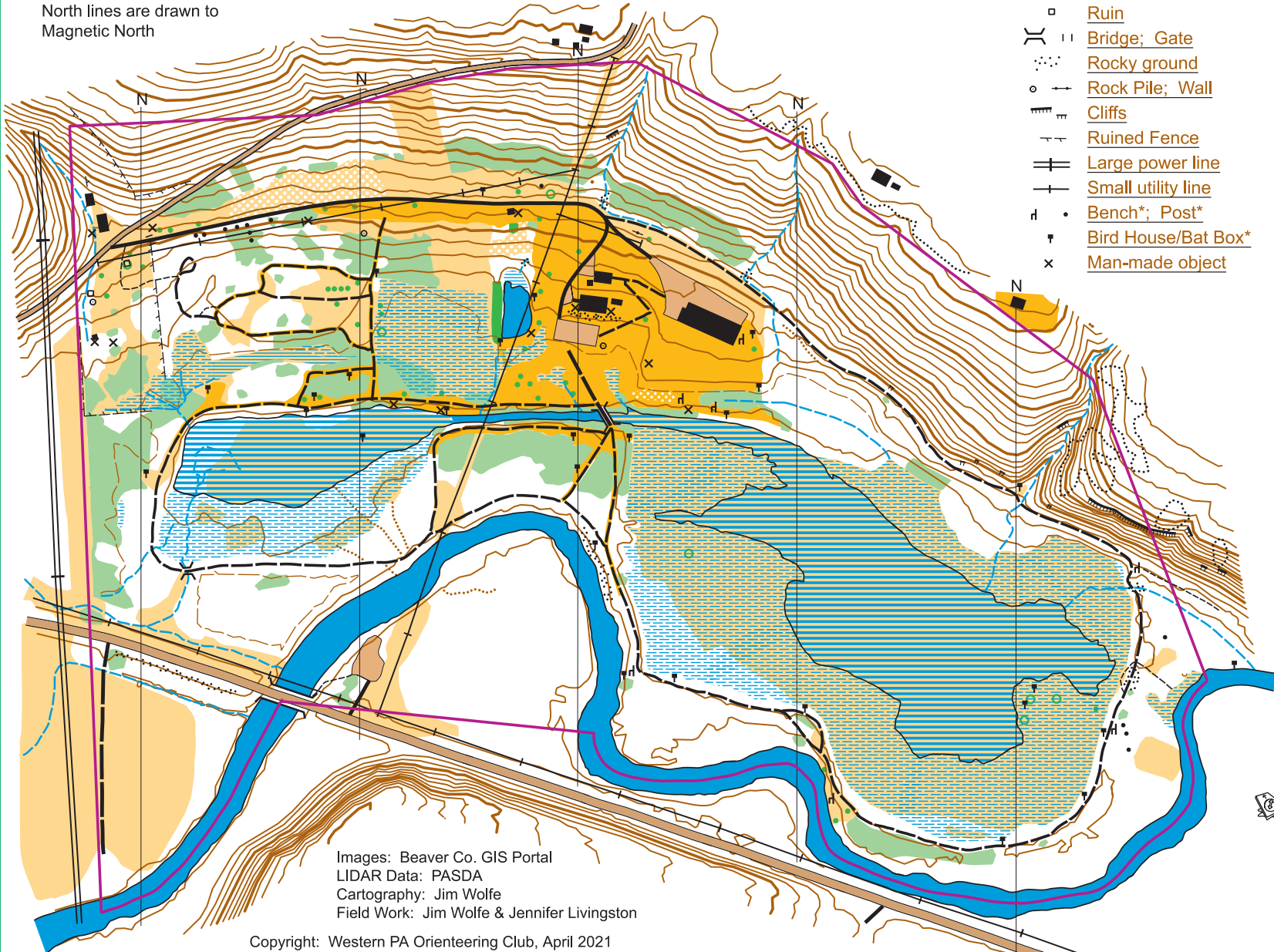
## Orienteering Map

Scale: 1 : 4 000

Contour Interval: 2.5 meters



North lines are drawn to  
Magnetic North



### Legend

- |  |                     |  |                                 |
|--|---------------------|--|---------------------------------|
|  | Major road          |  | Pond                            |
|  | Minor road          |  | Creek                           |
|  | Gravel road         |  | Stream                          |
|  | Dirt road           |  | Seasonal stream                 |
|  | Footpath            |  | Uncrossable marsh               |
|  | Buildings           |  | Marsh                           |
|  | Ruin                |  | Seasonal marsh                  |
|  | Bridge; Gate        |  | Contour lines                   |
|  | Rocky ground        |  | Index contour                   |
|  | Rock Pile; Wall     |  | Form line                       |
|  | Cliffs              |  | Dry Ditch                       |
|  | Ruined Fence        |  | Knoll                           |
|  | Large power line    |  | Parking area                    |
|  | Small utility line  |  | Open area                       |
|  | Bench*; Post*       |  | Rough open                      |
|  | Bird House/Bat Box* |  | Open with scattered trees       |
|  | Man-made object     |  | Rough open with scattered trees |
|  |                     |  | Forest                          |
|  |                     |  | Thicket                         |
|  |                     |  | Tree                            |
|  |                     |  | Copse*                          |
|  |                     |  | Tree line*                      |
|  |                     |  | Evergreen boundary              |
|  |                     |  | Boundary                        |

\*Non-Standard Symbol

Images: Beaver Co. GIS Portal  
 LIDAR Data: PASDA  
 Cartography: Jim Wolfe  
 Field Work: Jim Wolfe & Jennifer Livingston

Copyright: Western PA Orienteering Club, April 2021

